


Importing from a Google Scholar Account

NOTE: If you do not already have a Google Scholar account, you can create one for free. This will make it easier to find and export publications into BibTeX format.

1. Visit <https://scholar.google.com/> and create an account or link your current Google account to your library.
2. If you are setting up your citations for the first time, the site will automatically search for your publications with your name and ask if you want to add them to your “My Citations” page.
3. Select the publications you want to include on your “My Citations” page and continue.
4. Your “My Citations” page should look like this once you’ve completed the process:



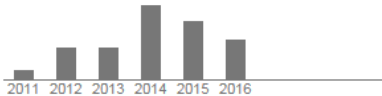
Kimberly LeCompte
Louisiana State University
No verified email
My profile is private - [Make it public](#)

[Change photo](#)

[Edit](#) [Follow](#)

Google Scholar

Citation indices	All	Since 2011
Citations	68	68
h-index	4	4
i10-index	3	3



Year	Citations
2011	1
2012	2
2013	2
2014	4
2015	3
2016	2

Add co-authors

[Arthur Haas](#) [+](#) [×](#)

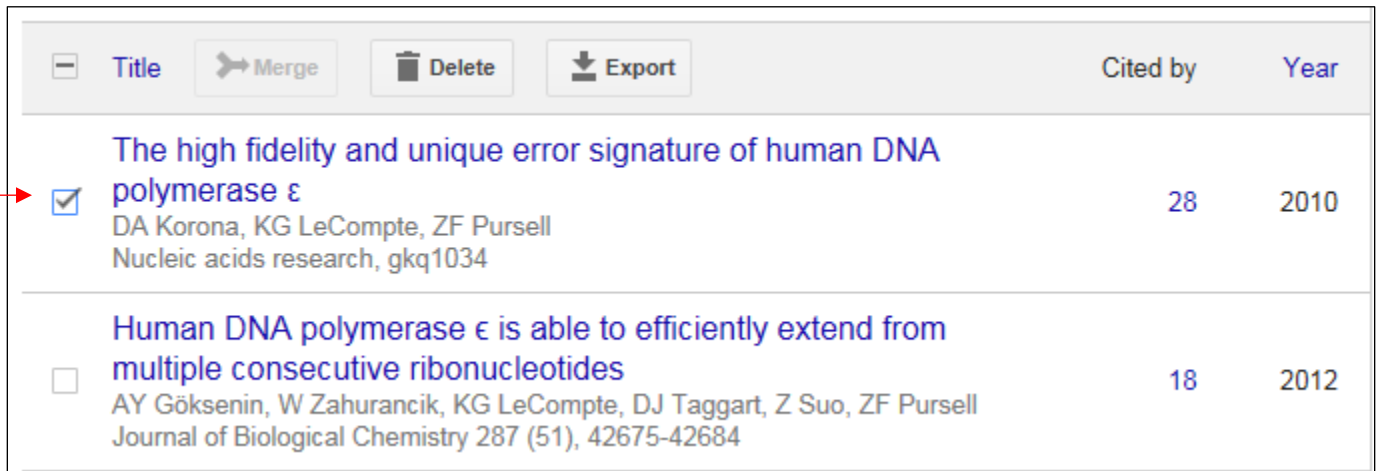
[Deli Chen](#) [+](#) [×](#)

Co-authors [Edit...](#)

No co-authors

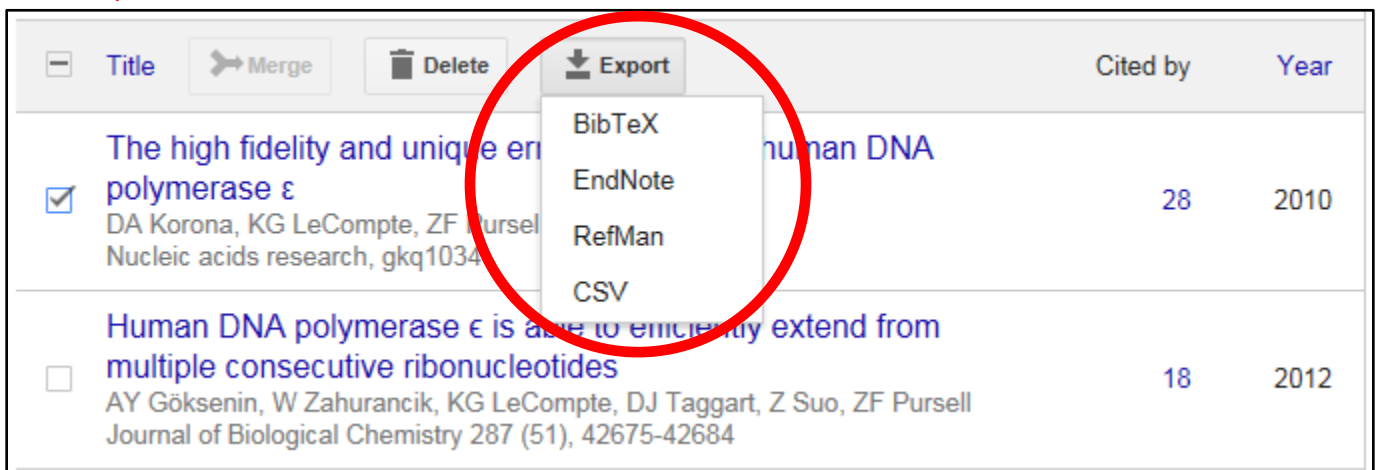
<input type="checkbox"/>	Title	+ Add	☰ More	1–6	Cited by	Year
<input type="checkbox"/>	The high fidelity and unique error signature of human DNA polymerase ϵ				28	2010
	DA Korona, KG LeCompte, ZF Pursell Nucleic acids research, gkq1034					
<input type="checkbox"/>	Human DNA polymerase ϵ is able to efficiently extend from multiple consecutive ribonucleotides				18	2012
	AY Göksenin, W Zahurancik, KG LeCompte, DJ Taggart, Z Suo, ZF Pursell Journal of Biological Chemistry 287 (51), 42675-42684					
<input type="checkbox"/>	Ser120 of Ubc2/Rad6 regulates ubiquitin-dependent N-end rule targeting by E3α/Ubr1				15	2010
	B Kumar, KG LeCompte, JM Klein, AL Haas Journal of Biological Chemistry 285 (53), 41300-41309					

5. Select the publications that you want to import into your LSU Faculty360 account by clicking on the radio button to the left of the publication. When you've made a selection, an "Export" option will appear.



<input type="checkbox"/>	Title	Merge	Delete	Export	Cited by	Year
<input checked="" type="checkbox"/>	The high fidelity and unique error signature of human DNA polymerase ϵ DA Korona, KG LeCompte, ZF Pursell Nucleic acids research, gkq1034				28	2010
<input type="checkbox"/>	Human DNA polymerase ϵ is able to efficiently extend from multiple consecutive ribonucleotides AY Göksenin, W Zahurancik, KG LeCompte, DJ Taggart, Z Suo, ZF Pursell Journal of Biological Chemistry 287 (51), 42675-42684				18	2012

6. Click "Export" and select BibTeX.

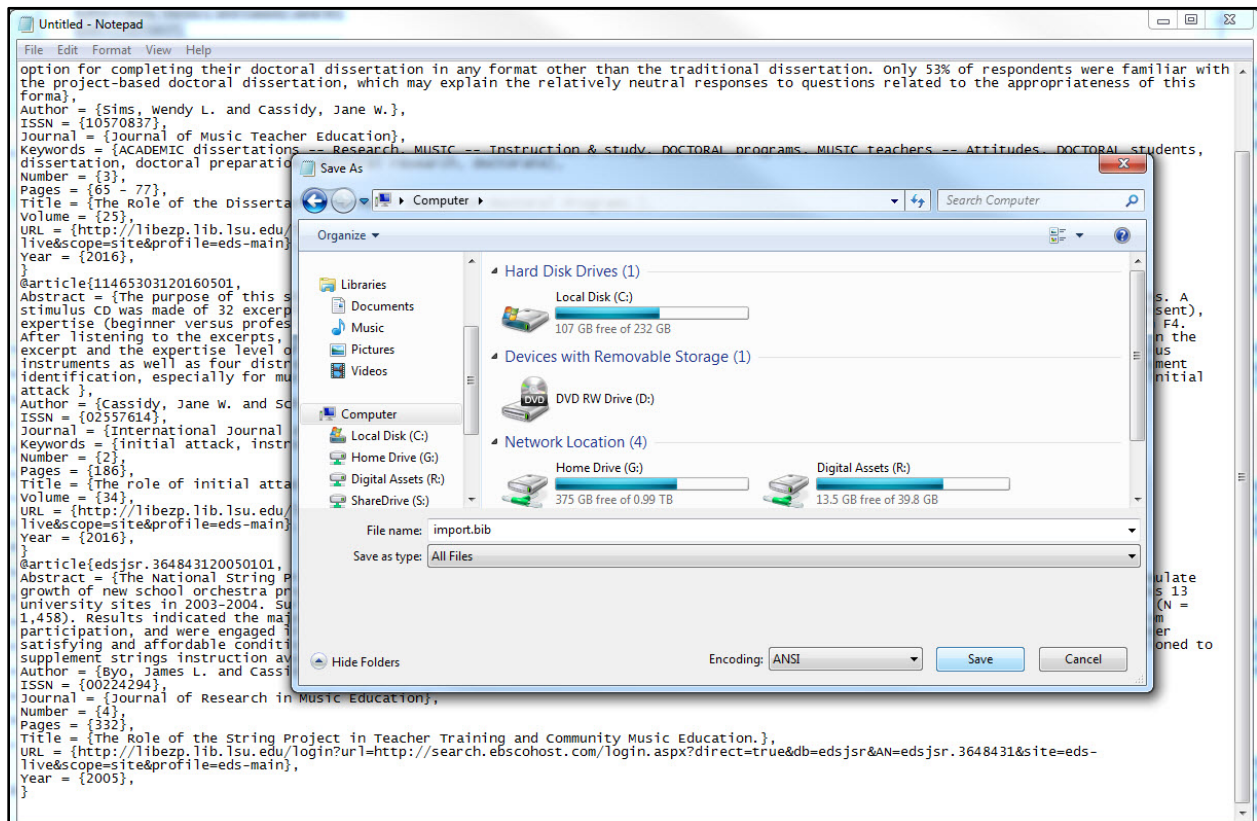


<input type="checkbox"/>	Title	Merge	Delete	Export	Cited by	Year
<input checked="" type="checkbox"/>	The high fidelity and unique error signature of human DNA polymerase ϵ DA Korona, KG LeCompte, ZF Pursell Nucleic acids research, gkq1034			<ul style="list-style-type: none">BibTeXEndNoteRefManCSV	28	2010
<input type="checkbox"/>	Human DNA polymerase ϵ is able to efficiently extend from multiple consecutive ribonucleotides AY Göksenin, W Zahurancik, KG LeCompte, DJ Taggart, Z Suo, ZF Pursell Journal of Biological Chemistry 287 (51), 42675-42684				18	2012

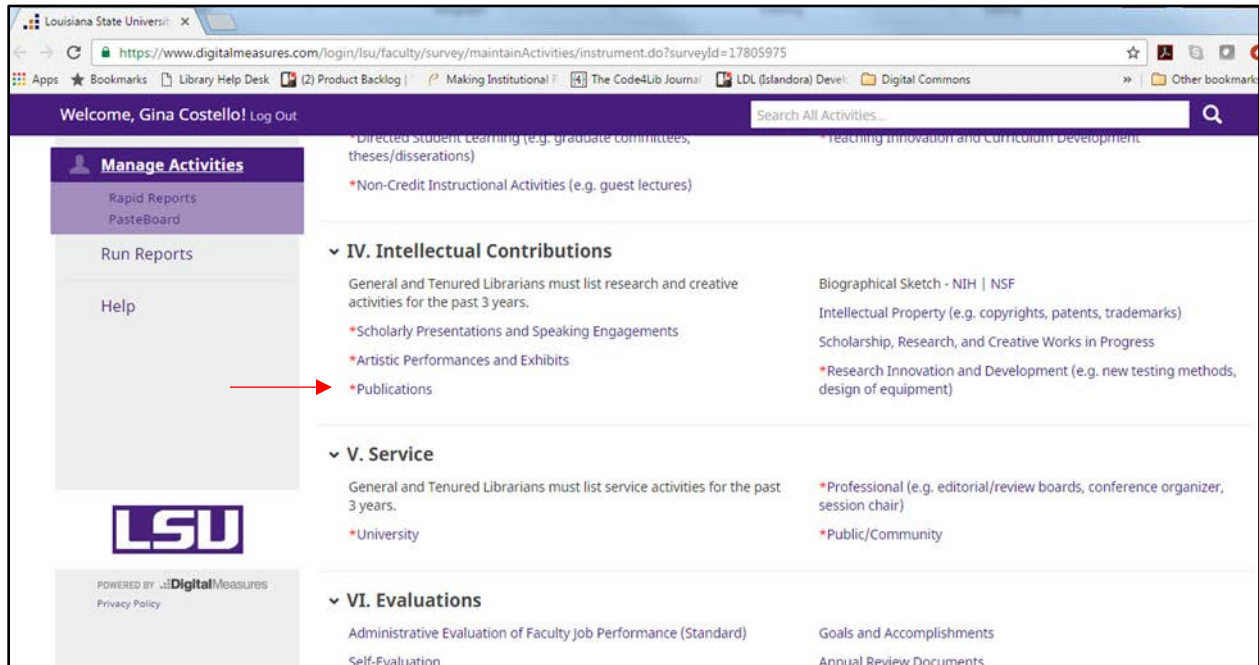
- Select all text, copy and paste the citation into a plain text editor such as Notepad for PC users or download Sublime Text for Mac users (this can be downloaded for free from <https://www.sublimetext.com/>).



- Click "File" -> "Save As" -> and name the file with the extension **.bib** (e.g. Publications.bib). Click Save.



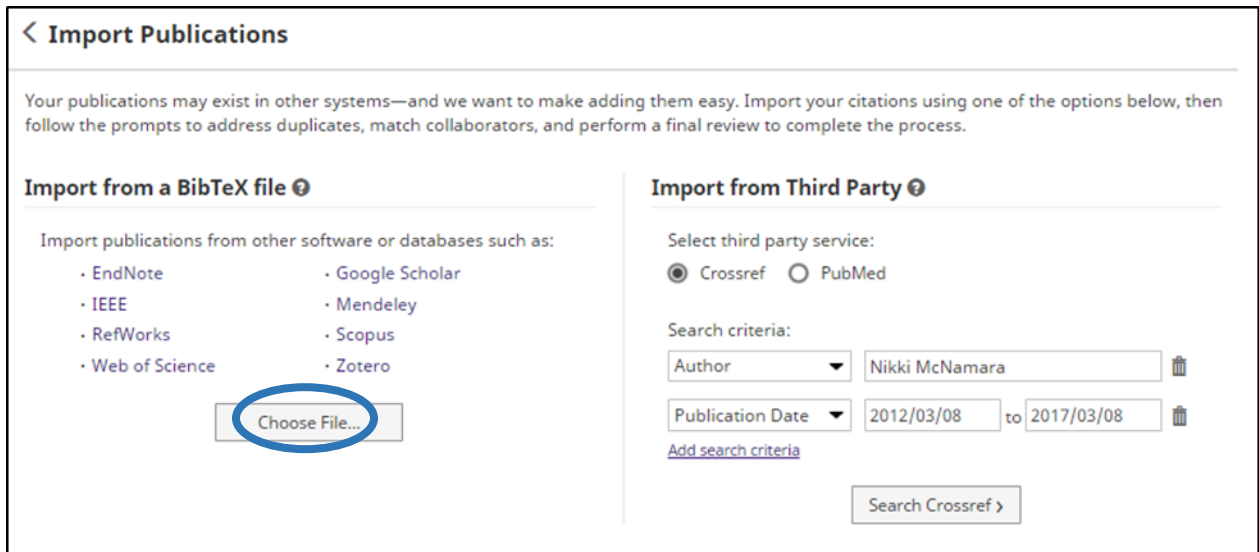
9. Log in to LSU Faculty360 and click on the Publications screen.



10. Select "Import Items".



11. Click "Choose File" and navigate to your saved BibTeX file.



12. Please skip the "match collaborators" step. This feature will be turned off. To skip, click "Continue".

13. Review your records and select **“Finish Import”**. Records can be edited after they are imported.

Manage Activities

- Run Reports
- Help

Import Items: Review and Finish Step 4 of 4

You are about to import 3 records. Please review to ensure you want to proceed.

← Record 1 of 3 →

Contribution Type	Journal Article
Explanation of "Other"	
Current Status	Published
Title of Contribution	The Role of the Dissertation in Music Education Doctoral Programs.
If this is part of a larger work (e.g., a chapter in a book), Title of Larger Work	
Author/Editor/Translator 1	Sims, Wendy L.
Author/Editor/Translator 2	Cassidy, Jane W
Journal Name	Journal of Music Teacher Education

LSU